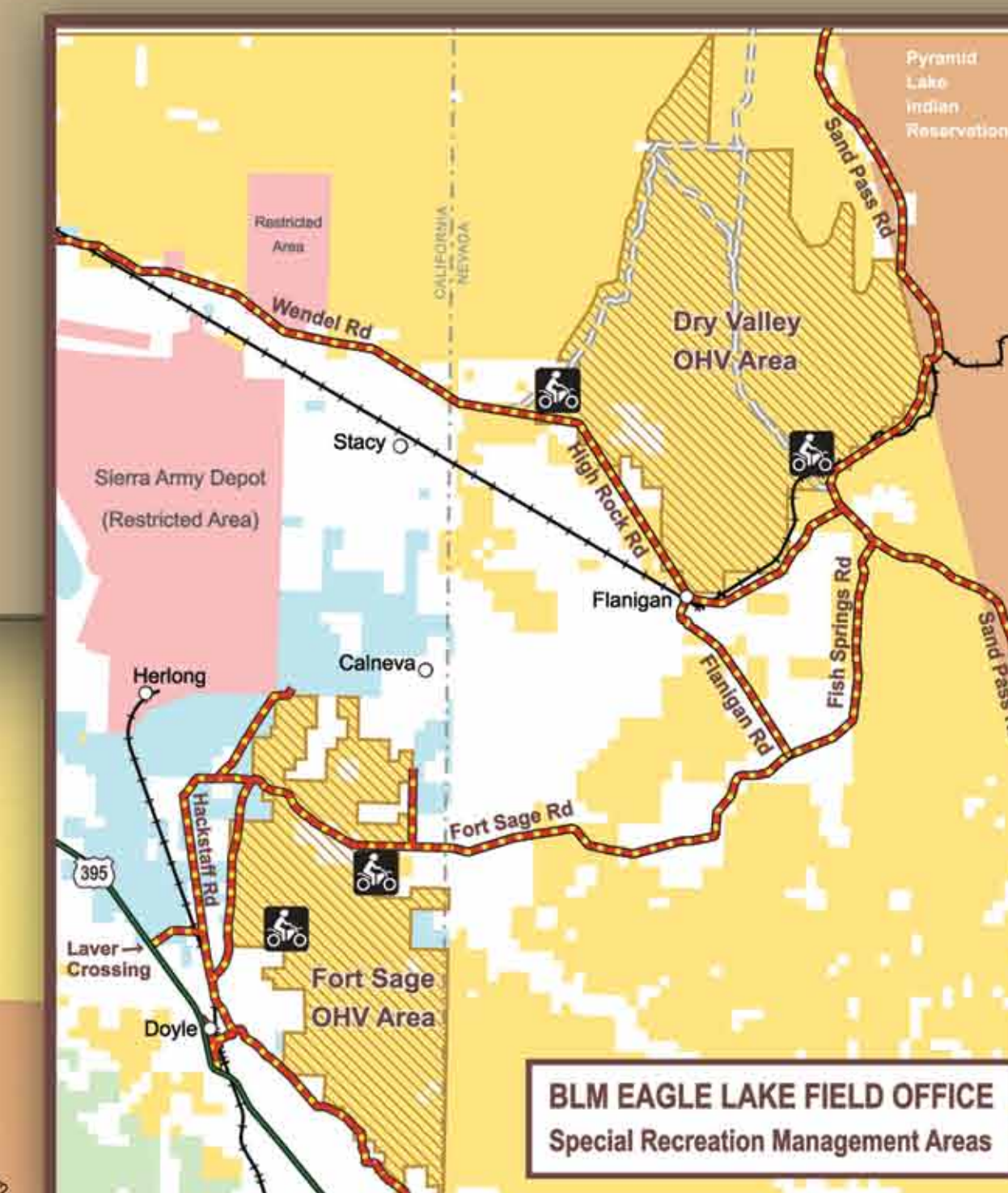


# Area Map

## Dry Valley Off-Highway Vehicle Area



Legend	
	Bureau of Land Management (BLM)
	US Forest Service (USFS)
	Military
	State
	Private/Other
	Pyramid Lake Indian Reservation
	Dry Valley Rim WSA
	Staging/Camping Area
<b>Trail Number &amp; Difficulty Rating</b>	

### Markers

#### Trail Markers at Dry Valley

Brown trail markers designate the type of vehicle recommended, level of difficulty and route numbers. Travel with caution and ride within your skill level.



#### Vehicle Recommendation

- Open to two wheeled motorcycle
- Open to all terrain vehicles (ATV)
- Open to Four wheel drive high clearance vehicles
- Red slash: do not take vehicle shown on the route

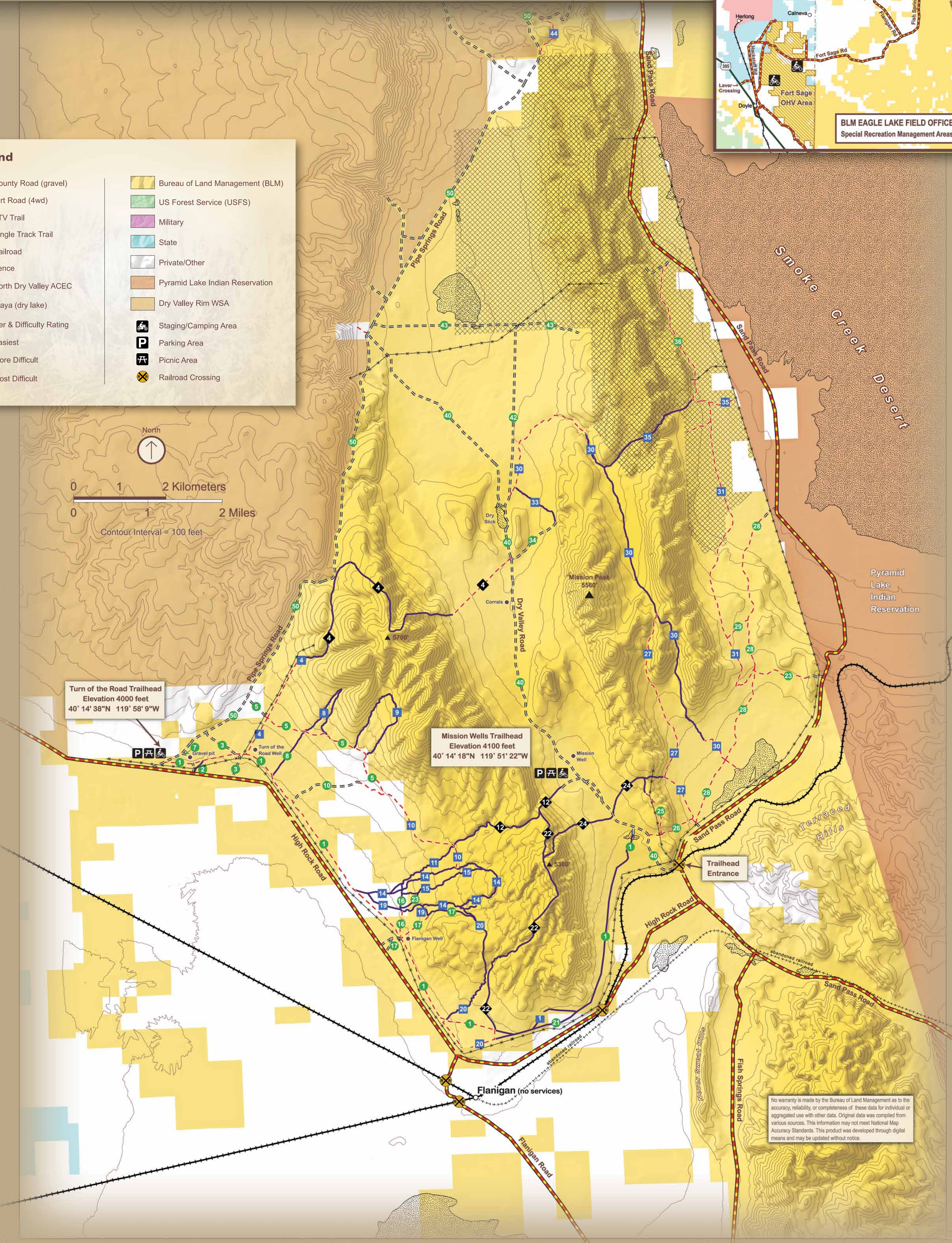
#### Level of Difficulty

- Black Diamond (Most Difficult)
- Blue Square (More Difficult)
- Green Circle (Easiest)

#### Emergency - Dial 911

**Nearest Hospital**  
Banner Lassen Medical Center  
1800 Spring Ridge Drive, Susanville, CA  
(530) 252-2000

**For More Information:**  
Bureau of Land Management  
Eagle Lake Field Office 2950 Riverside Drive  
Susanville, CA 96130 · (530) 257-0456



No warranty is made by the Bureau of Land Management as to the accuracy, reliability, or completeness of these data for individual or aggregated use with other data. Original data was compiled from various sources. This information may not meet National Map Accuracy Standards. This product was developed through digital means and may be updated without notice.

Trail conditions change constantly, be ready for anything!